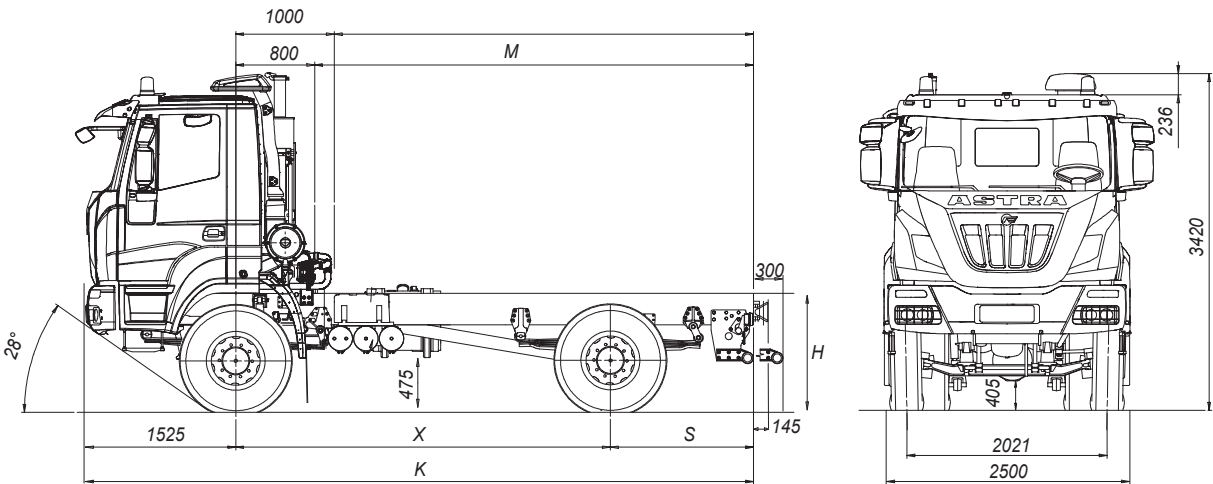




chassis-cab 4x4
44.38 / 44.42 / 44.44 / 44.48 / 44.54



DIMENSIONS (mm)

X	K	M max (*)	S	H		TURNING DIAMETER (WALL TO WALL)
				unloaded	loaded	
3800	6775	4450	1450	1210	1105	16190
4200	7575	5250	1850	1210	1105	17480
4600	8375	6050	2250	1210	1105	18770
5100	8875	6550	1900-2250	1210	1105	20390
6700	11675	9350	3450	1210	1105	25550

(*) M max.: indicative value calculated in std configuration to be confirmed by bodybuilder.
(Tyres 315/80R22.5).



WEIGHTS (kg)

X	Distribution net weight (*)			Max technical weight			
	First axle	Rear axles	Net Weight	First axle	Rear axles	Gross Vehicle Weight	Gross Combination Weight
3800	5235	2510	7745	8000 9000 (1) 10000 (2)	13000	21000	55000
4200	5225	2565	7790				
4600	5225	2635	7860				
5100	5260	2635	7895				
6700	6165	1835	8000				

(*) Net weight including driver with tanks filled to at least 90%, equipped with standard equipment according to the manufacturer's specifications and, if fitted, the mass of the bodywork, spare wheels and tool box.
(1) With tyres on front axle 385/65R22.5 or 325/95R24 and reinforced springs (OPT).
(2) With reinforced front axle, 325/95R24 tyres and max speed limited to 70 km/h, depending on tyre type and brand.

The data shown are indicative and non-binding.
Astra reserves the right to make any changes at any time and without notice.



ENGINES

CURSOR 13 turbo intercooler euro 3 diesel injection/cycle with electronic unit injection pumps. Single block head, four valves per cylinder, light alloy pistons. Total displacement: 12.882 cm³. Bore for stroke: 135x150 mm. 6 in-line cylinders. Water cooling. Dry air filter with safety cartridge. Vertical muffler.

	44.38	44.42	44.44	44.48	44.54
Model	Cursor 13				
Max power (EEC)	280 kW (380 HP)	309 kW (420 HP)	324 kW (440 HP)	353 kW (480 HP)	397 kW (540 HP)
Corresponding rpm	1900 rpm				
Max Torque (EEC)	1.800 Nm (183 kgm)	1.900 Nm (194 kgm)	2.100 Nm (214 kgm)	2.200 Nm (224 kgm)	2.350 Nm (240 kgm)
Turbine	WG (Waste Gate)		VGT (Variable Geometry Turbine)		



GEARBOX

Manual **ZF** Ecosplit 4 technology gearbox with servoshift, 16 synchronised forward speeds + 2 reverse. First/last speed ratio: 13.80/0.84.

On request:

Automated **ZF** AS-Tronic (from 420 HP), 16 synchronised forward speeds + 2 reverse. First/last speed ratio: 14.12/0.83. Fully automatic **ALLISON** (from 440 HP), 7 speeds forward + 1 reverse. First/last speed ratio: 7.63/0.64.



CLUTCH

Single dry plate, diameter 17". Pull type engagement with diaphragm spring. Hydro-pneumatic power steering engagement control, with driven disc wear recovery slave cylinder.



TRANSFER BOX

Mechanical with two ratios. Helical spur gears, mounted on three propeller shafts, engaged with each other. Lockable differential by pneumatic control from driver seat. Transmission ratio: 1:1 - 1:1.6. Front/rear torque distribution ratio: 1:2.2.



AXLES

FRONT:

1st axle driving and steering, with double reduction: central by bevel gear, final by planetary gear in wheel hubs.

On request: Cross-axle differential lock. Kessler front axle:

8 ton version

9 ton version with reinforced suspension

10 ton version with reinforced suspension and steering system

REAR:

Driving axle with double reduction: central with bevel gear, final by planetary gear in wheel hubs. Cross-axle differential lock.

On request: Rear-axle ratio 1:3.793; 1:4.229; 1:5.009; 1:5.558; 1:6.095; 1:6.588.



SUSPENSIONS

FRONT:

1st axle, parabolic springs, 4 leaves 24x90 mm, with hydraulic shock absorbers. Standard stabilizer bar.

On request: Reinforced parabolic springs, 5 leaves 24x90 mm (mandatory with 9t version).

REAR:

Parabolic springs, 4 leaves 24x90 mm + 1 leaf 50x90 mm, with hydraulic shock absorbers. Standard stabilizer bar.



CHASSIS

Special steel with high tensile strength limit, two flat and parallel side members (width 820 mm.), C section (320x70x8 mm), cross members bolted to the frame.

R.B.M. (Rail Bending Moment): 143.149 Nm (14.597 Kgm.). Steel front bumpers with headlamp protection grids, front maneuvering hook, rear underrun bar, steel fuel tank capacity 300 litres.



TYRES

FRONT: 315/80R22.5 156/150 K Single tubeless.

REAR: 315/80R22.5 156/150 K Twin tubeless Spare wheel on the chassis.

Other Possible combinations:

13 R22.5 156/150K

385/65R22.5 160J (*) + 315/80R22.5 156/150K

325/95R24 162/160K (*) (**)

(*) Mandatory with 9 ton front axle load.

(**) Mandatory with 10 ton front axle load.

Other tyres available, subject to the Astra technical office approval.



BRAKES

Front and rear drum brakes, Duo-Duplex with automatic slack adjuster. ABS + EBL system.

Service brake: Pedal controlled air brake, acting on all wheels.

Solo vehicles: two independent circuits, one for 1st axle, one for 2nd axle.

Towing vehicles: three independent circuits, one for 1st axle, one for 2nd axle and another for the trailer.

Emergency brake: Integrated in service brake.

Parking brake: Mechanical spring-type with pneumatic control acting on 2nd axle wheels.

IVECO BRAKE TURBO engine brake.

On request: Hydraulic additional braking system on transmission (only for automated and automatic gearbox).

OFF/ROAD button for excluding ABS for speed 15 kph.



ELECTRICAL SYSTEM

Voltage: 24 V.

Alternator generator 90 A - 28 V (2520 W).

Accumulators: 2 in series, 180 Ah.

Starter motor 24 V 5.5 kW.

Mechanically controlled electrical circuit breaker.



CAB

Standard white short cab built in galvanized pressed steel with hydraulic tilting up to 60°. Cab suspension with 4 helicoidal springs with coaxial shock absorbers and integrated dampers, anti-roll bar and end-of-stroke pads. Tinted electric door windows. Mechanical rear view mirrors, wide angle mirrors and front view mirror. Internal panels completely washable and fireproof. Compressed air quick coupling for cab cleaning. 4-speed ventilation and heating system with air recirculation system. Air suspended 3-way adjustable driver seat and mechanical passenger seat.