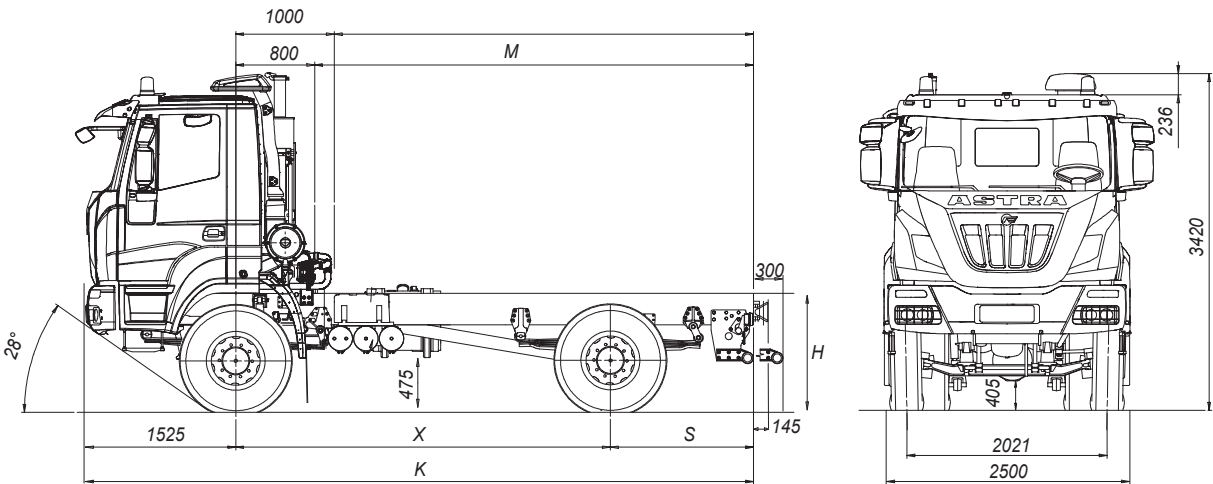




chassis-cab 4x2
42.38 / 42.42 / 42.44 / 42.48



DIMENSIONS (mm)

X	K	M max (*)	S	H		TURNING DIAMETER (WALL TO WALL)
				unloaded	loaded	
3800	6775	4450	1450	1150	1110	16230
4200	7575	5250	1850	1150	1110	17530
4600	8375	6050	2250	1150	1110	18820
5100	8875	6550	2250	1150	11310	20440

(*) M max.: indicative value calculated in std configuration to be confirmed by bodybuilder.
Tyres 315/80R22.5).



WEIGHTS (kg)

X	Distribution net weight (*)			Max technical weight			
	First axle	Rear axles	Net Weight	First axle	Rear axles	Gross Vehicle Weight	Gross Combination Weight
3800	4920	2360	7280	8000 9000 (1)	13000	21000	55000
4200	4915	2415	7330				
4600	4925	2490	7415				
5100	4960	2510	7470				

(*) Net weight including driver with tanks filled to at least 90%, equipped with standard equipment according to the manufacturer's specifications and, if fitted, the mass of the bodywork, spare wheels and tool box.

(1) With tyres on front axle 385/65R22.5 or 325/95R24 and reinforced springs (OPT).





ENGINES

CURSOR 13 turbo intercooler euro 3 diesel injection/cycle with electronic unit injection pumps. Single block head, four valves per cylinder, light alloy pistons. Total displacement: 12.882 cm³. Bore for stroke: 135x150 mm. 6 in-line cylinders. Water cooling. Dry air filter with safety cartridge. Vertical muffler.

	42.38	42.42	42.44	42.48
Model	Cursor 13			
Max power (EEC)	280 kW (380 HP)	309 kW (420 HP)	324 kW (440 HP)	353 kW (480 HP)
Corresponding rpm	1900 rpm			
Max Torque (EEC)	1.800 Nm (183 kgm)	1.900 Nm (194 kgm)	2.100 Nm (214 kgm)	2.200 Nm (224 kgm)
Turbine	WG (Waste Gate)		VGT (Variable Geometry Turbine)	



GEARBOX

Manual **ZF** Ecosplit 4 technology gearbox with servoshift, 16 synchronised forward speeds + 2 reverse. First/last speed ratio: 13.80/0.84.

On request: Automated **ZF** (from 420 HP), 16 synchronised forward speeds + 2 reverse. First/last speed ratio: 14.12/0.83.



CLUTCH

Single dry plate, diameter 17". Pull type engagement with diaphragm spring. Hydro-pneumatic power steering engagement control, with driven disc wear recovery slave cylinder.



AXLES

FRONT:

Steering, hot moulding in high tensile steel.

REAR:

Driving axle with double reduction: central with bevel gear, final by planetary gear in wheel hubs. Cross-axle differential lock.

On request:

Rear-axle ratio 1:3.793; 1:4.229; 1:5.009; 1:5.558; 1:6.095; 1:6.588.



SUSPENSIONS

FRONT:

1st axle, parabolic springs, 4 leaves 24x90 mm, with hydraulic shock absorbers. Standard stabilizer bar.

On request:

Reinforced parabolic springs, 5 leaves 24x90 mm (mandatory with 9t version).

REAR:

Parabolic springs, 4 leaves 24x90 mm + 1 leaf 50x90 mm, with hydraulic shock absorbers. Standard stabilizer bar.



CHASSIS

Special steel with high tensile strength limit, two flat and parallel side members (width 820 mm.), C section (320x70x8 mm), cross members bolted to the frame.

R.B.M. (Rail Bending Moment): 143.149 Nm (14.597 Kgm.). Steel front bumpers with headlamp protection grids, front manoeuvring hook, rear underrun bar, steel fuel tank capacity 300 litres.



TYRES

FRONT: 315/80R22.5 156/150 K Single tubeless.

REAR: 315/80R22.5 156/150 K Twin tubeless.

Spare wheel on the chassis.

Other Possible combinations in the commercial product offering.

Other tyres available, subject to the Astra technical office approval.



BRAKES

Front and rear drum brakes, Duo-Duplex with automatic slack adjuster. ABS + EBL system.

Service brake: Pedal controlled air brake, acting on all wheels. Solo vehicles: two independent circuits, one for 1st axle, one for 2nd axle.

Towing vehicles: three independent circuits, one for 1st axle, one for 2nd axle and another for the trailer.

Emergency brake: Integrated in service brake.

Parking brake: Mechanical spring-type with pneumatic control acting on 2nd axle wheels.

IVECO BRAKE TURBO engine brake.

On request:

Hydraulic additional braking system on transmission (only for automated gearbox).

OFF/ROAD button for excluding ABS for speed 15 kph.



STEERING

ZF 8098 quadrilateral power steering on front axle wheels with variable ratio 1:22.2/1:26.2 with auxiliary cylinder. Circuit with main hydraulic pump on engine and emergency pump on gearbox. Steering rods with self-lubricating joints. Height and inclination mechanical adjustable steering wheel.



ELECTRICAL SYSTEM

Alternator generator 90 A - 28 V (2520 W).

Accumulators: 2 in series, 180 Ah.

Starter motor 24 V 5.5 kW.

Mechanically controlled electrical circuit breaker.



CAB

White cab built in galvanized pressed steel with hydraulic tilting up to 60°. Cab suspension with 4 helicoidal springs with coaxial shock absorbers and integrated dampers, anti-roll bar and end-of-stroke pads. Tinted electric door windows. Internal panels completely washable and fireproof. Rapid pneumatic connection for cab cleaning. 4-speed ventilation and heating system with air recirculation system. Air suspended 3-way adjustable driver seat and mechanical passenger seat.